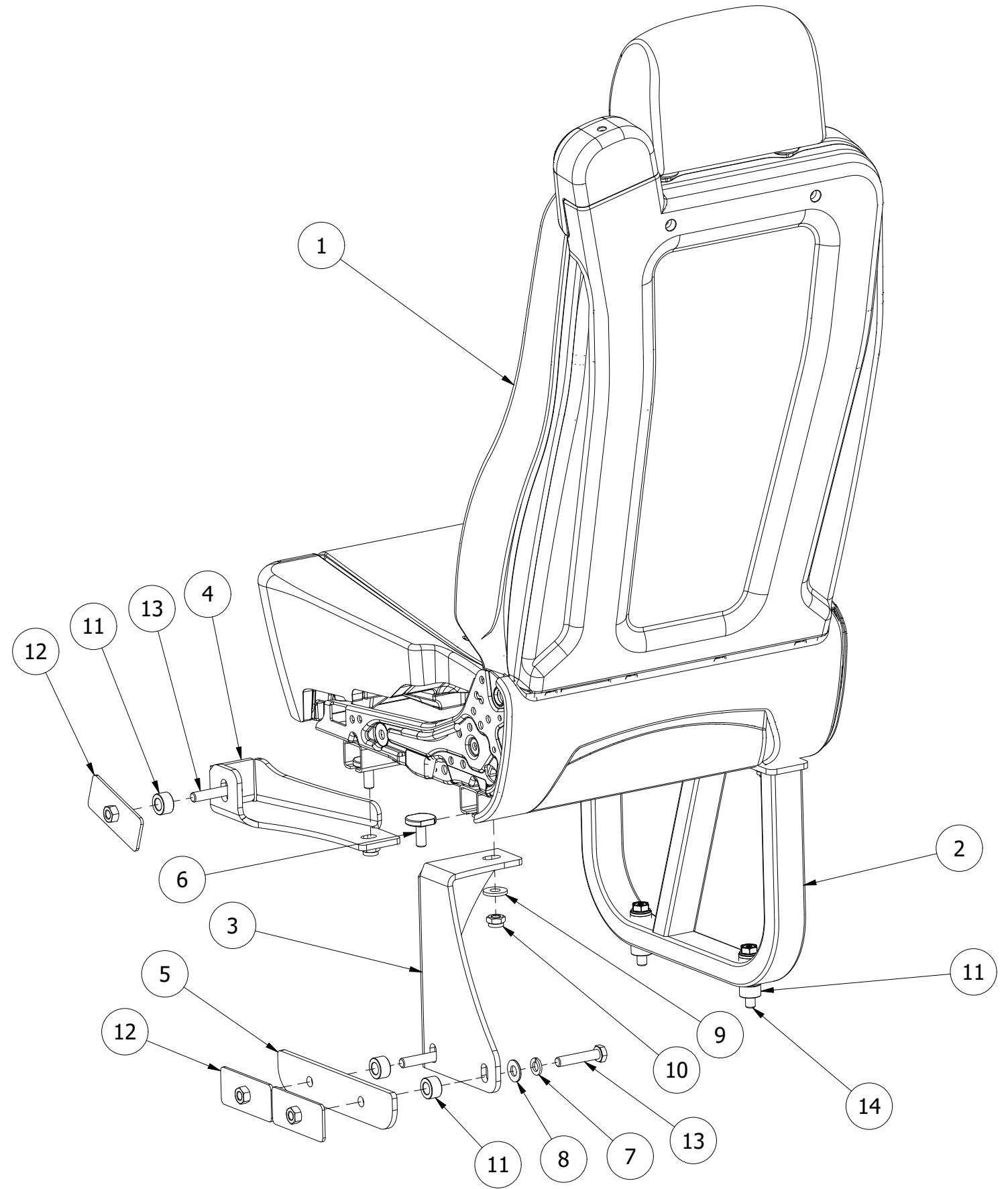
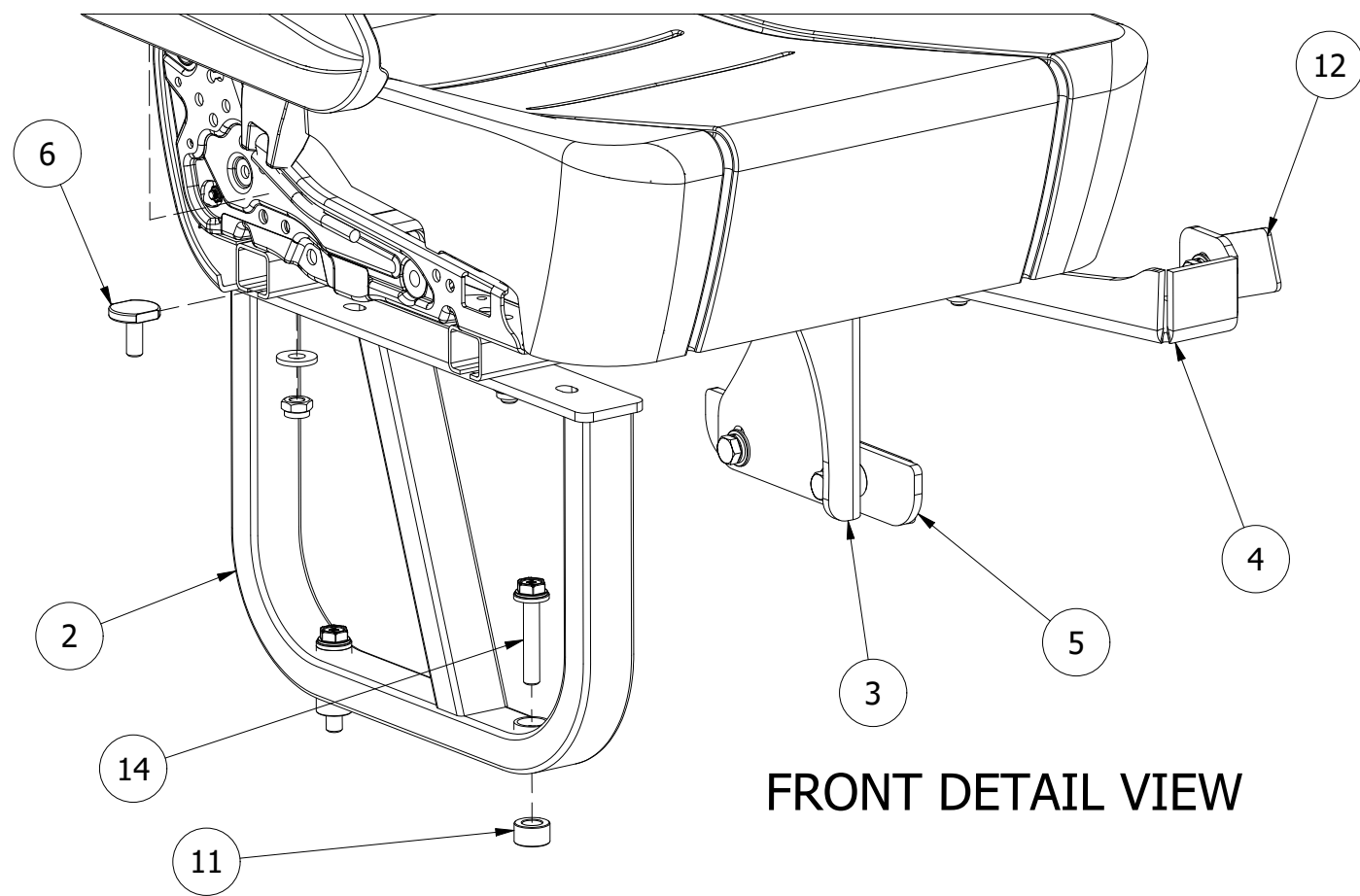


ITEM NO.	PART NO.	QTY.	DESCRIPTION	PACKED BY
1	-	1	INTERLINE SINGLE SEAT	
2	TS1092	1	H300 HIACE COMMUTER SEAT LEG	
3	TS1170	1	PASSENGER SIDE REAR BRACKET	
4	TS1171	1	PASSENGER SIDE FRONT BRACKET	
5	TS1093-01	1	DRIVER/PASSENGER SIDE WALL PLATE	
6	10X25M SEGE	4	M10 x 25 BOLT - SEGE 4030X	
7	10M SW	3	M10 SPRING WASHER	
8	10M ZPW	3	M10 FLAT WASHER	
9	10X25X3M SEGE	4	M10 x 25 X 3mm FLAT WASHER - SEGE 4030X	
10	10M NYLN	4	M10 NYLOC NUT	
11	TS533A	5	SPACER Ø22.2 x 12.6mm	
12	TS371	3	M10 UNDERFLOOR PLATE 95 X 40	
13	10X50M 88 ZPSS	3	M10 x 50mm HEX HEAD SET SCREW	
14	-	2	ORIGINAL TOYOTA SEAT LEG BOLT	NOT SUPPLIED
15	-	1	FITTING INSTRUCTIONS	



IMPORTANT INFORMATION FOR INSTALLERS

Aftermarket seats and swivels sold by Techsafe Seating have been tested by an approved testing authority in Australia and found to meet the strength and performance requirements of the appropriate standards. Aftermarket seats and swivels should only be installed by competent and experienced personnel. Aftermarket seats and swivels in some state jurisdictions may require certification by a qualified certifying engineer. In all instances professional engineering advice should be sought to ensure the suitability of the integration of the seat or swivel into the original vehicle structure and to consider for any effect the modification may have on that vehicles compliance with legislated standards. As the manufacturer and seller of this product has no control over the end use or the fitment to the vehicle, the manufacturer and seller accepts no responsibility or liability for any malfunction of the product or the vehicle occupant safety systems as a direct or indirect result of faulty installation or unauthorized repair or modification to this product. Modification of the seat, swivel or installation kit should not be made without certification by a qualified engineer or manufacturers written consent. Where components of the installation kit are modified to better suit the specific nature of the installation, these must be substituted with components of equivalent or greater strength. Good engineering practice should be evident at all times including the use of metal spacers between brackets and the floor pan, appropriately torqued anchorage bolts, rust inhibitors on drilled holes and adhesive sealant used on underfloor backing plates.

PROPRIETARY AND CONFIDENTIAL

THE INFORMATION CONTAINED IN THIS DRAWING IS THE SOLE PROPERTY OF TECHSAFE. ANY REPRODUCTION IN PART OR AS A WHOLE WITHOUT THE WRITTEN PERMISSION OF TECHSAFE IS PROHIBITED.



56 Lower Mountain Road
 HERVEY BAY QLD 4655
 PH 07 4128 3337
 email: technical@techsafeseating.com.au
 web: techsafeseating.com.au

PRODUCT **INTERLINE SINGLE SEAT**

VEHICLE/PROJECT
**TOYOTA HIACE COMMUTER H300 SLWB
 PEOPLE MOVER 05/2019 ON**

DESIGN APPROVAL No. 20200022R002Rev0	COMPLIES WITH VSB 5 (3.0 - Rev. 1)	REV 0
DATE 18/06/2020	DWG No. PK131	