

ITEM NO.	PART NO.	QTY.	DESCRIPTION	PACKED BY
1	TSA1148	1	SEAT SWIVEL ASSEMBLY	
2	-	4	ORIGINAL SEAT FLOOR BOLT (NOT SUPPLIED)	
3	-	5	ORIGINAL SEAT UNDERSIDE NUT (NOT SUPPLIED)	
4	TS1297	1	HANDBRAKE COVER	
5	B-139	1	FLOOR INFILL 1	
6	B-138	1	FLOOR INFILL 2	
7	B-165	1	FLOOR INFILL 4	
8	B-166	1	FLOOR INFILL 5	
9	TS1114-11	1	DASHBOARD TRIM PANEL	
10	23 WB 1016	2	#10 X 16mm PHILLIPS SCREW	
11	6X40M 88 ZPSS	2	M6 x 40mm HEX HEAD SET SCREW	
12	6M ZP BRTW	2	M6 FLAT WASHER	
13	TS533A	1	SPACER Ø22.2 x 12.6mm	
14	TS142	1	SPACER Ø26.7 x 25mm	
15	TS-LB07	1	SWIVEL WARNING STICKER	

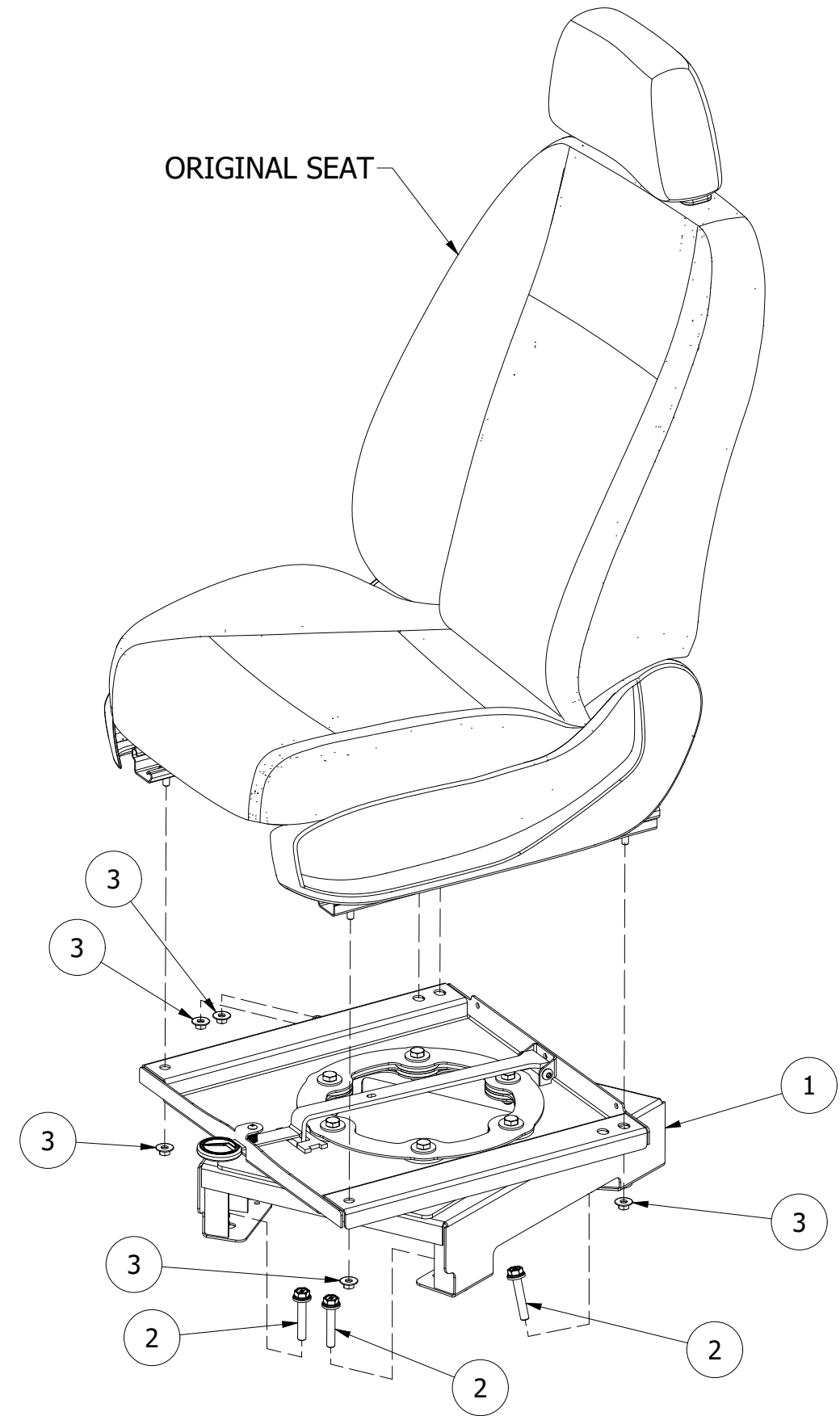
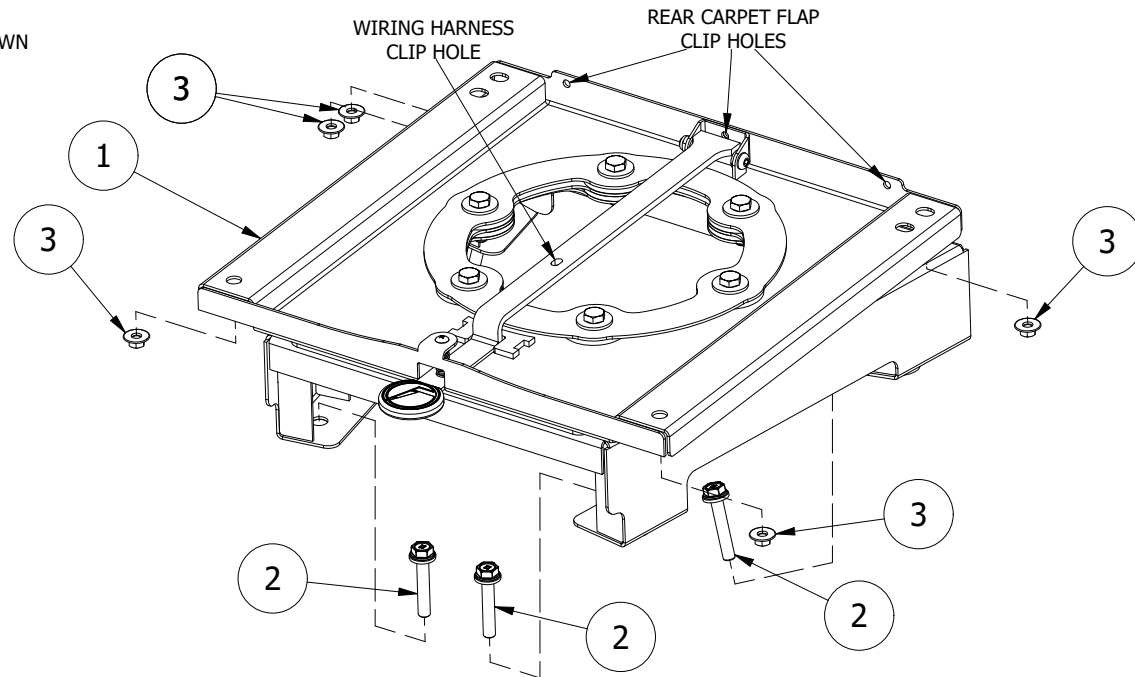


PRODUCT
WEB LINK

ASSEMBLY INSTRUCTIONS

1. REMOVE CENTRE CONSOLE AND ORIGINAL SEAT. THIS INCLUDES UNCLIPPING THE REAR CARPET FLAP AND ANY UNDERSIDE WIRING HARNESSES FROM THE SEAT
2. REMOVE SEAT BASE FRAME FROM SEAT
3. PLACE SWIVEL INTO VEHICLE, IN POSITION OF THE ORIGINAL SEAT BASE FRAME
4. FIT THE 4 x M10 ORIGINAL SEAT FLOOR BOLTS (NOTE: THE REAR 2 BOLTS CAN BE ACCESSED THROUGH OPENING IN TOP OF SWIVEL)
5. FIT THE SEAT ONTO THE SEAT SWIVEL BASE, ENSURING THE 5 OEM SEAT UNDERSIDE STUDS ARE CORRECTLY ALIGNED WITH HOLES IN THE SWIVEL TOP PLATE. TURNING THE SWIVEL TO APPROX. 30° WILL ASSIST WITH ACCESSING THE SEAT UNDERSIDE STUDS
6. FIT THE 5 x ORIGINAL SEAT UNDERSIDE NUTS REMOVED IN STEP 2
7. RE-CONNECT ANY WIRING CONNECTORS UNDER THE SEAT AND CLIP HARNESS INTO THE SLOT ON THE TOP OF THE SWIVEL LEVER
8. REFIT THE ORIGINAL SEAT REAR CARPET FLAP, USING THE 3 OEM PLASTIC CLIPS, INTO THE REAR OF THE SWIVEL TOP PLATE

NOTE: TORQUE M10 BOLTS TO 44Nm
DRIVER'S SIDE SWIVEL BASE SHOWN



The installer must label the seat with this Warning: **THIS SEAT IS ONLY TO BE USED IN THE FORWARD FACING POSITION WHEN THE VEHICLE IS IN MOTION**

The OEM centre console must be removed to allow the seat swivel to turn without any interference.
If fitting a swivel to the driver side seat, the handbrake must be relocated/converted to a floor type, or push button parking brake.
This swivel cannot be fitted if OEM seats are non-factory type.

IMPORTANT INFORMATION FOR INSTALLERS

Aftermarket seats and swivels sold by Techsafe Seating have been tested by an approved testing authority in Australia and found to meet the strength and performance requirements of the appropriate standards. Aftermarket seats and swivels should only be installed by competent and experienced personnel. Aftermarket seats and swivels in some state jurisdictions may require certification by a qualified certifying engineer. In all instances professional engineering advice should be sought to ensure the suitability of the integration of the seat or swivel into the original vehicle structure and to consider for any effect the modification may have on that vehicles compliance with legislated standards. As the manufacturer and seller of this product has no control over the end use or the fitment to the vehicle, the manufacturer and seller accepts no responsibility or liability for any malfunction of the product or the vehicle occupant safety systems as a direct or indirect result of faulty installation or unauthorized repair or modification to this product. Modification of the seat, swivel or installation kit should not be made without certification by a qualified engineer or manufacturers written consent. Where components of the installation kit are modified to better suit the specific nature of the installation, these must be substituted with components of equivalent or greater strength. Good engineering practice should be evident at all times including the use of metal spacers between brackets and the floor pan, appropriately torqued anchorage bolts, rust inhibitors on drilled holes and adhesive sealant used on underfloor backing plates.

PROPRIETARY AND CONFIDENTIAL

THE INFORMATION CONTAINED IN THIS DRAWING IS THE SOLE PROPERTY OF TECHSAFE. ANY REPRODUCTION IN PART OR AS A WHOLE WITHOUT THE WRITTEN PERMISSION OF TECHSAFE IS PROHIBITED.



56 Lower Mountain Road
HERVEY BAY QLD 4655
PH 07 4128 3337
email: technical@techsafeseating.com.au
web: techsafeseating.com.au

PRODUCT SEAT SWIVEL

VEHICLE/PROJECT
TOYOTA HIACE H300 05/2019 ON (ALL MODELS) WITH CENTRE CONSOLE TRAY

DESIGN APPROVAL No. 20210022R001Rev0

DATE 1/12/2022

COMPLIES WITH ADR 3 & 5

DWG No. PK236

REV

1

ADDITIONAL FITTING INSTRUCTIONS

STEP 1 - HANDBRAKE COVER INSTALLATION

Remove the vinyl OEM handbrake cover/surround and unclip the vinyl boot from the surround.

Next, fit the vinyl boot into the sheet metal handbrake cover. Fit the boot clamp plate into the underside of the handbrake cover, as seen in **Figure 1**. Ensure the vinyl boot is correctly aligned before tightening the **M6 x 25mm screws**.

After the **M6 x 25mm screws** are tightened, double check to ensure the vinyl boot is correctly aligned and secure in the handbrake cover.

The sheet metal handbrake/vinyl boot cover can now be re-fitted over the handbrake.

Secure using the M6 x 40mm bolts, washers and spacers provided.

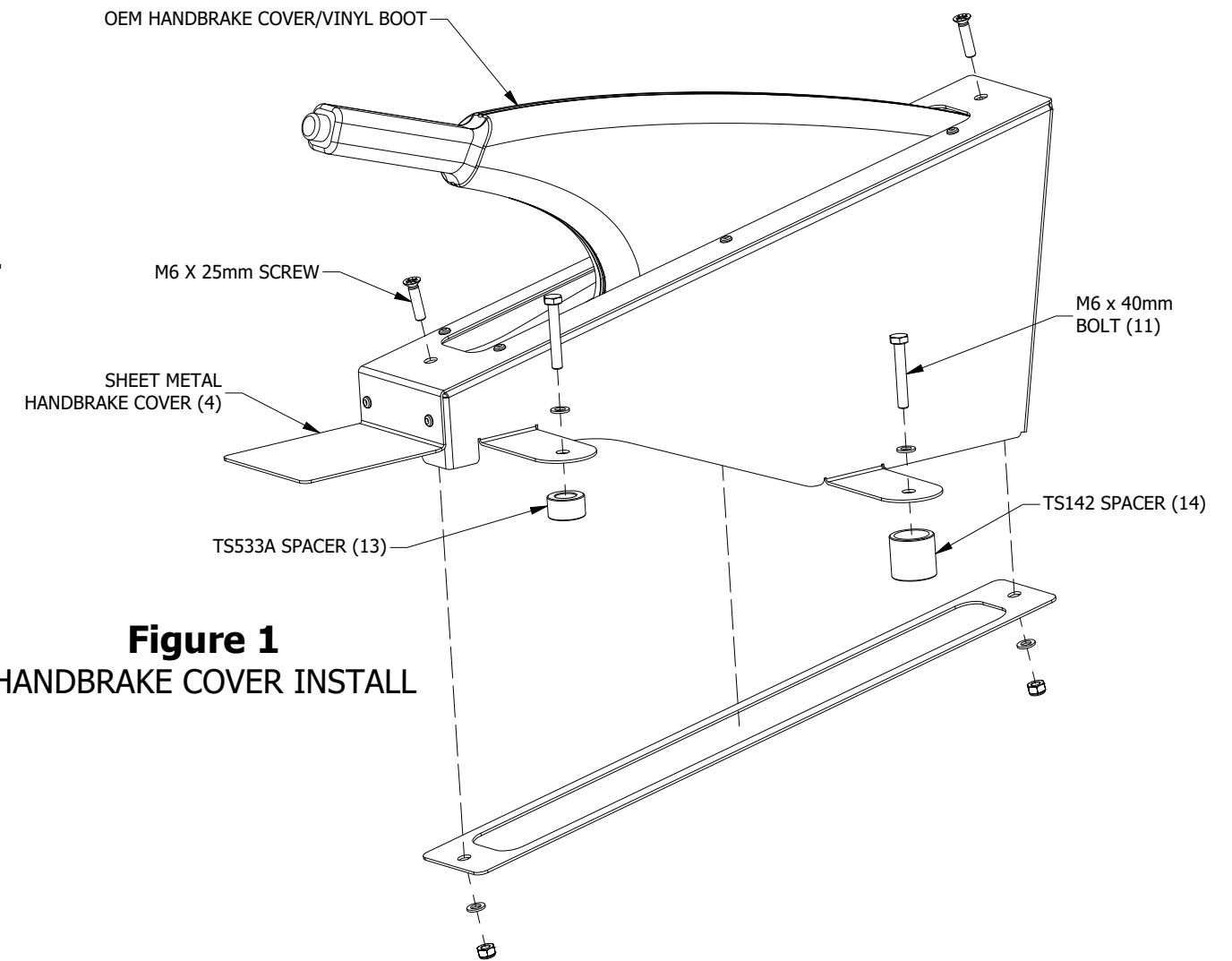
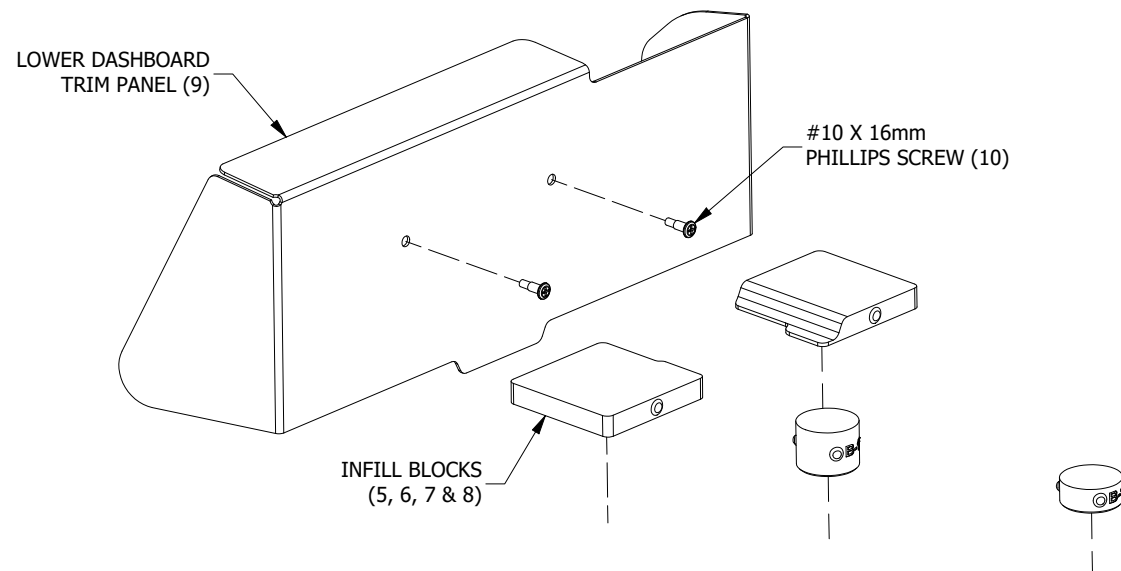


Figure 1
HANDBRAKE COVER INSTALL

Figure 2
DASHBOARD PANEL & FLOOR INFILLS



STEP 2 - DASHBOARD COVER PANEL & FLOOR INFILLS

As shown in **Figure 2**, fit the 4 floor infill blocks into the open floor cavities left from the centre console removal. **NOTE: These infill blocks can be glued in if desired. Infill block shape may vary for Crew Van and Commuter variants. Contact us to discuss.**

Next, align the front lower dashboard trim panel and secure using the 2 supplied #10 x 16mm screws. **Do not over tighten the screws, as they thread into soft plastic.**

IMPORTANT INFORMATION FOR INSTALLERS

Aftermarket seats and swivels sold by Techsafe Seating have been tested by an approved testing authority in Australia and found to meet the strength and performance requirements of the appropriate standards. Aftermarket seats and swivels should only be installed by competent and experienced personnel. Aftermarket seats and swivels in some state jurisdictions may require certification by a qualified certifying engineer. In all instances professional engineering advice should be sought to ensure the suitability of the integration of the seat or swivel into the original vehicle structure and to consider for any effect the modification may have on that vehicles compliance with legislated standards. As the manufacturer and seller of this product has no control over the end use or the fitment to the vehicle, the manufacturer and seller accepts no responsibility or liability for any malfunction of the product or the vehicle occupant safety systems as a direct or indirect result of faulty installation or unauthorized repair or modification to this product. Modification of the seat, swivel or installation kit should not be made without certification by a qualified engineer or manufacturers written consent. Where components of the installation kit are modified to better suit the specific nature of the installation, these must be substituted with components of equivalent or greater strength. Good engineering practice should be evident at all times including the use of metal spacers between brackets and the floor pan, appropriately torqued anchorage bolts, rust inhibitors on drilled holes and adhesive sealant used on underfloor backing plates.

PROPRIETARY AND CONFIDENTIAL

THE INFORMATION CONTAINED IN THIS DRAWING IS THE SOLE PROPERTY OF TECHSAFE. ANY REPRODUCTION IN PART OR AS A WHOLE WITHOUT THE WRITTEN PERMISSION OF TECHSAFE IS PROHIBITED.



56 Lower Mountain Road
HERVEY BAY QLD 4655
PH 07 4128 3337
email: technical@techsafeseating.com.au
web: techsafeseating.com.au

PRODUCT SEAT SWIVEL

VEHICLE/PROJECT
TOYOTA HIACE H300 05/2019 ON (ALL MODELS) WITH CENTRE CONSOLE TRAY

DESIGN APPROVAL No. 20210022R001Rev0

DATE 1/12/2022

COMPLIES WITH ADR 3 & 5

DWG No. PK236

REV

1